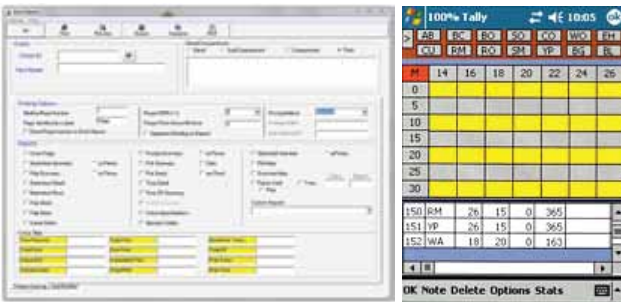


INTRODUCTION

Cruise Control was developed and is maintained by Landmark Forestry LLC of Horner, WV. Designed by foresters, for foresters in 2000, the application was produced as a necessity for an easy, fast and accurate method of entering data while cruising. Since then, there have been several new versions of the program released with new features added and old features improved. We listened to our clients on what features they would like to see and what would make the program more user friendly when creating new versions.

WHAT IS CRUISE CONTROL?

This powerful application is an effective and robust solution to meet most if not all forest inventory needs. Designed to run on ruggedized mobile handheld computers, data can be collected in adverse weather conditions. After field data is collected, the data is downloaded to the desktop application at which point customized reporting functionality and data manipulation/editing are available. Cruise Control has evolved over time into what we believe is the best forest inventory management software on the market.



**IF YOU'RE INTERESTED IN
OUR CRUISE CONTROL
SOFTWARE,
PLEASE CONTACT
US TO SET UP A
CONSULTATION
OR TO RECEIVE A QUOTE
BASED ON YOUR
REQUIREMENTS.**



Landmark Sales
Cruise Control Software
691 Stalnaker Addition Road
PO Box 205
Horner, WV 26372
Phone (304) 269-4831
Fax (304) 269-6300
michaela@landmarkforestryllc.com



TIMBER INVENTORY SOFTWARE

**FAST
EASY
ACCURATE**

WWW.CRUISECONTROLSOFTWARE.COM

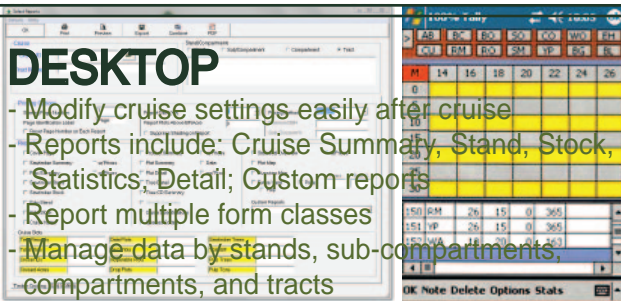
SOFTWARE FEATURES

Created and developed and is maintained by Asimilars Forestry, LLC by Horner, WV. Easy to use data entry screen. Designed by foresters, for foresters in 2000, the application was produced as a necessity for an easy, fast and accurate method of entering data while cruising. Since then, there have been several new versions of the program released with new features and old features improved. Download and print reports in just a few minutes. Large selection of reports and printing options. User Friendly!

HANDHELD WHAT IS CRUISE CONTROL?

This powerful application is an effective and robust solution to meet most if not all forest inventory needs. Multiple user inventory setup sharing available. User defined species codes and grades. Cruise Types: Point Sample, 100% Tally, Fixed Area, Double Point Sample. After field data is collected, the data is downloaded to the desktop application at which point customized reporting functionality and data manipulation/editing are available. Cruise Control has evolved over time into what we believe is the best forest inventory management software on the market.

- Handheld reporting with pricing
- Third party mapping software capable



DESKTOP

- Modify cruise settings easily after cruise
- Reports include: Cruise Summary, Stand, Stock, Statistics, Detail; Custom reports
- Report multiple form classes
- Manage data by stands, sub-compartments, compartments, and tracts
- Report pricing by species, grade, diameter
- Easily exchange data
- Import existing data from Excel
- Reports can be exported as PDF files or to Excel

HARDWARE OPTIONS

IF YOU ARE INTERESTED IN CONTACT US FOR A QUOTE OR TO REQUEST A DEMO.



NAUTIZ X8 | HANDHELD

New generation rugged handheld computer with large touchscreen and ready for use in the field.

- 4.7" High Resolution Touchscreen
- 7.5 x 3.1 x 1.3 in, 17.3 ounces
- Windows Embedded Handheld 6.5.3 Android 4.2.2
- 1 GB RAM/4GB iNAND Flash
- Texas Instruments 4470 dual-core, 1.5 GHz processor
- GPS Receivers, WLAN functionality
- Built in 8 megapixel camera
- 12 Hour Battery Life on a single charge
- Designed for rugged outdoor use and water proof
- Can survive in -22° F to 140° F temperatures

Includes: International power adapter, Capacitive stylus, michael@landmarkforestry.com



JUNO T41 | TRIMBLE

Fully rugged, highly-accurate with a multi-touch user interface and reliable performance.

- 4.3" WVGA Sunlight Readable Touchscreen
- 6.1 x 3.2 x .9 in, 13.5 ounces
- Windows Embedded Handheld 6.5 Android 4.1
- 512 MB RAM, 16 GB 2-SP Flash Storage
- Texas Instruments T3M333 processor
- Real-time GPS accuracy
- Built in 8 megapixel camera with geo-tagging
- Full day battery life
- Water, dust and drop tested and proved.
- Can operate in -22° F to 144° F temperatures

Includes: International power adapter, T41 USB cable, Battery, Wrist Strap, Ultra-clear screen protectors, SIM/SD card tool, Quick-start guide

WWW.CRUISECONTROLSOFTWARE.COM