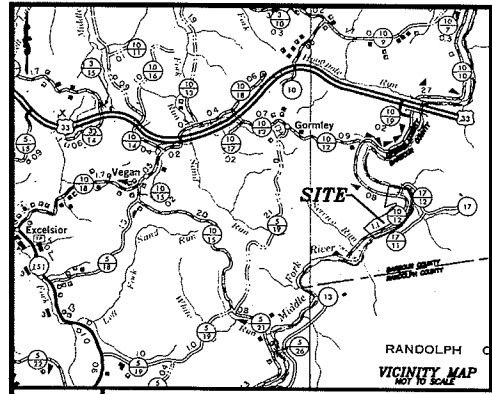


PLAT SHOWING THE SUBDIVISION OF
THE CROSSING ON THE MIDDLE FORK



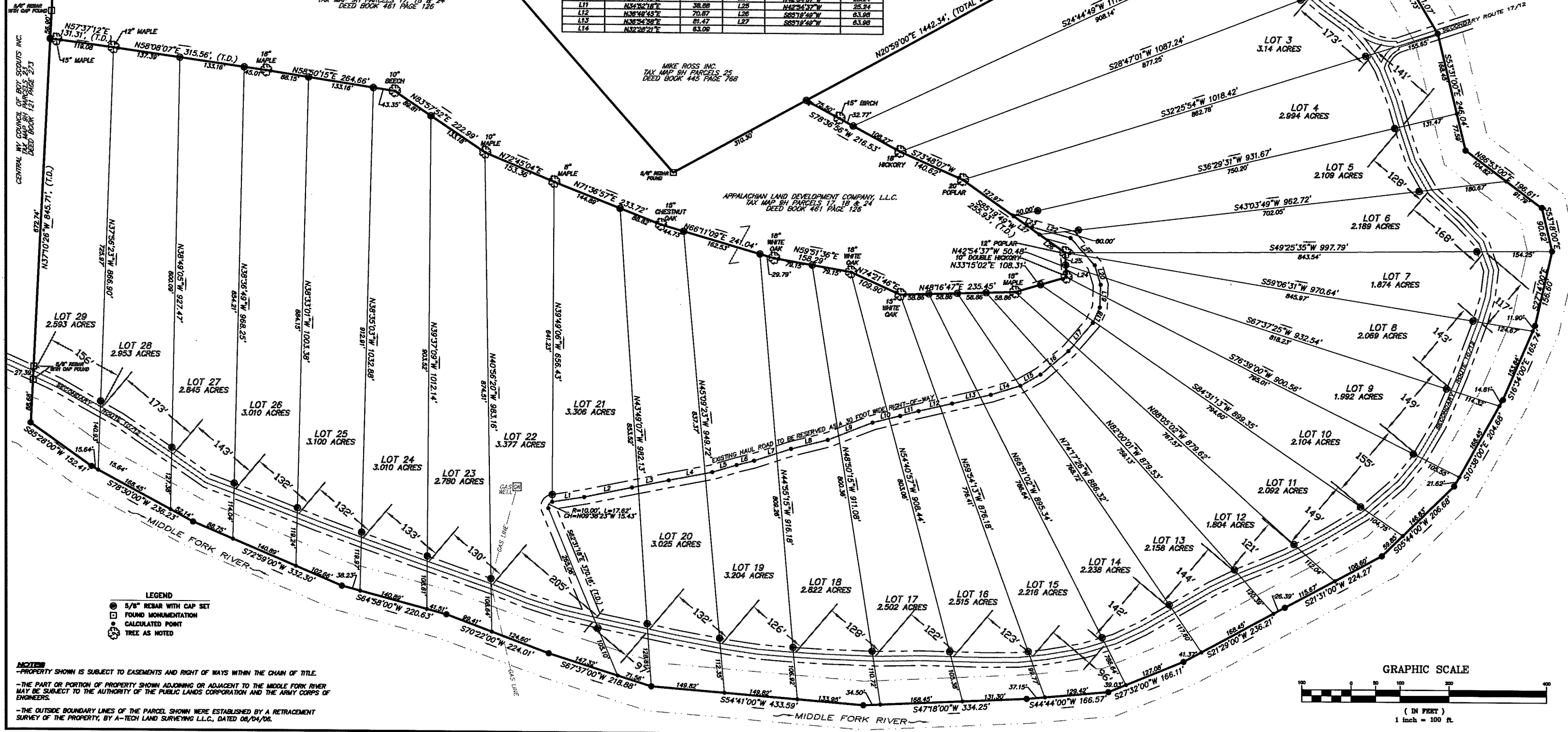
APPALACHIAN LAND DEVELOPMENT COMPANY, L.L.C.
TAX MAP 84 PARCELS 17, 18 & 24
DEED BOOK 461 PAGE 126

LINE TABLE				LINE TABLE			
LINE	BEARING	LENGTH	LINE	BEARING	LENGTH	LINE	BEARING
L1	N40°50'30"E	85.83	L15	N20°59'00"E	1442.34'	L29	N20°59'00"E
L2	N38°16'38"E	99.14	L16	N08°22'47"E	74.29	L30	N20°59'00"E
L3	N38°22'38"E	78.97	L17	N00°22'04"E	76.57	L31	N20°59'00"E
L4	N38°38'20"E	80.37	L18	N15°38'35"W	34.63	L32	N20°59'00"E
L5	N33°07'40"E	82.15	L19	N37°38'32"W	48.69	L33	N20°59'00"E
L6	N33°48'28"E	36.71	L20	N26°48'37"W	41.89	L34	N20°59'00"E
L7	N31°42'30"E	78.89	L21	N01°30'12"W	74.89	L35	N20°59'00"E
L8	N30°31'30"E	76.81	L22	S65°17'26"W	80.78	L36	N20°59'00"E
L9	N28°08'38"E	87.64	L23	S65°31'25"W	11.25	L37	N20°59'00"E
L10	N24°21'16"E	87.75	L24	S65°34'37"W	25.54	L38	N20°59'00"E
L11	N24°16'18"E	38.89	L25	N48°24'37"W	25.54	L39	N20°59'00"E
L12	N24°48'45"E	70.87	L26	S85°12'48"W	63.98	L40	N20°59'00"E
L13	N24°34'38"E	81.47	L27	S85°12'48"W	63.98	L41	N20°59'00"E
L14	N32°26'21"E	83.06	L28	S85°12'48"W	63.98	L42	N20°59'00"E

MIKE ROSS INC.
TAX MAP 84 PARCELS 25
DEED BOOK 445 PAGE 788

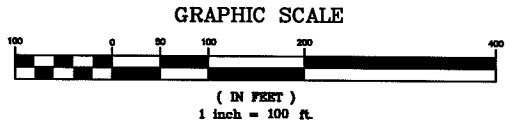
APPALACHIAN LAND DEVELOPMENT COMPANY, L.L.C.
TAX MAP 84 PARCELS 17, 18 & 24
DEED BOOK 461 PAGE 126

ORIENTED TO PREVIOUS SURVEY
BY A-TECH LAND SURVEYING L.L.C.
DATED AUGUST 4TH, 2006



LEGEND
 ● 5/8" REBAR WITH CAP SET
 □ FOUND MONUMENTATION
 ○ CALCULATED POINT
 ○ TREE AS NOTED

NOTES
 -PROPERTY SHOWN IS SUBJECT TO EASEMENTS AND RIGHT OF WAYS WITHIN THE CHAIN OF TITLE.
 -THE PART OR PORTION OF PROPERTY SHOWN ADJOINING OR ADJACENT TO THE MIDDLE FORK RIVER MAY BE SUBJECT TO THE AUTHORITY OF THE PUBLIC LANDS CORPORATION AND THE ARMY CORPS OF ENGINEERS.
 -THE OUTSIDE BOUNDARY LINES OF THE PARCEL SHOWN WERE ESTABLISHED BY A RETRACEMENT SURVEY OF THE PROPERTY, BY A-TECH LAND SURVEYING L.L.C., DATED 08/04/06.



H:\projects\06\06043\CAD\SURVEY\Landmark-subd.dwg, 2/5/2007 2:47:01 PM, bw1126

REVISION NUMBER	REVISIONS	DATE	BY

Chapman Technical Group
 ENGINEERS • ARCHITECTS • INTERIOR DESIGNERS • LANDSCAPE ARCHITECTS
 P. O. Box 988, Rt. 280, West Virginia P. O. Box 225, West Virginia
 260 227-2801 260 272-2801

PROJECT INFORMATION
OWNER:
 APPALACHIAN LAND DEVELOPMENT COMPANY, L.L.C.
 SITUATE ON THE WATERS OF THE
 MIDDLE FORK RIVER, UNION DISTRICT
 UPSHUR COUNTY, WEST VIRGINIA

PARTITION & SUBDIVISION SURVEY

SEAL

JOB NUMBER:	06043
SCALE:	1" = 100'
DATE:	12/13/06
DRAWN BY:	BWL
DESIGNED BY:	
CHECKED BY:	
SHEET NO.	
REVISION	